

Industry Leading Cereal Seed Treatment

EMERGENTSTTM

GUARDIAN

UNIQUELY FORMULATED FOR PNW
& INTERMOUNTAIN WEST CROPS

No Yield Left Behind

- Premier disease control paired with industry-leading wireworm protection makes Emergent ST Guardian™ the most comprehensive seed treatment blend on the market, exclusively available at The McGregor Company.
- Emergent ST Guardian has an exclusive disease package with multiple modes of action targeting over 20 early season root-rot diseases such as rhizoctonia, fusarium, pythium, and dwarf bunt.
- Fall plantings with Emergent ST Guardian provide unrivaled wireworm protection throughout the entire spring feeding season, leaving no winter wheat bushels behind at harvest time.

Protect against the Hidden Yield Robber



Emergent ST Guardian contains Teraxxa, the only seed-applied insecticide that causes direct wireworm mortality in winter wheat.

OVER **50%** YIELD LOSS

can be attributed to wireworm damage⁺

⁺The McGregor Company, Research Compendium, 2021

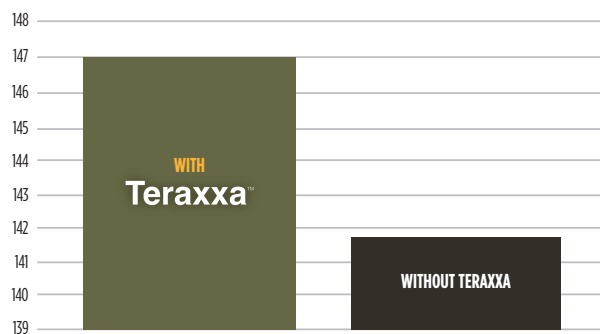
DON'T LEAVE

\$35 per acre BEHIND

Adding Teraxxa to sites **with no known wireworm presence** increased net income by an average of \$35 per acre, indicating wireworms were present.

Across replicated trials by The McGregor Company in winter wheat.

Increased Yield Across Locations with Teraxxa



The McGregor Company 2020, site averages across 10 locations.

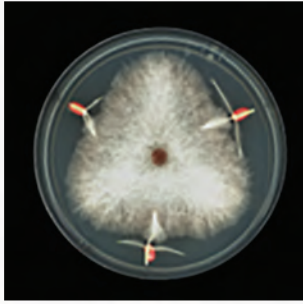
Specialized Seed
Treatment Solutions



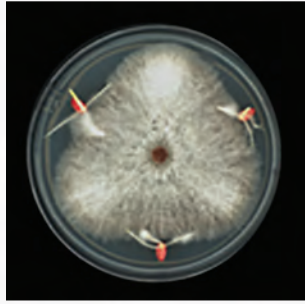
www.mcgregor.com

SUPERIOR RHIZOCTONIA CONTROL

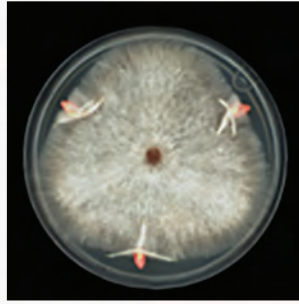
Emergent ST Guardian outperforms premium competing seed treatment blends for disease protection.
(Rhizoctonia solani AG8 – PDA++ | 3 days | Room temp.)



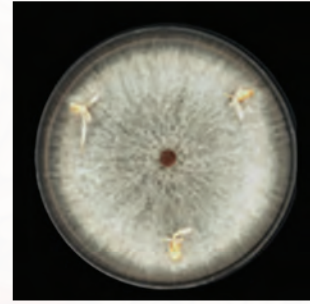
EMERGENTST



INDUSTRY LEADING CHECK



DIFENOCONAZOLE



UNTREATED CHECK

McGregor Disease Plate Study – PNW; MKD-S-2023-US-IMF-C-01.0

FREQUENTLY ASKED QUESTIONS

What diseases will Emergent ST Guardian protect against?

Along with superior wireworm control, Emergent ST Guardian contains a unique disease protection package guarding against rhizoctonia, fusarium, pythium, and dwarf bunt. This is the most complete comprehensive Terraxa blend product on the market and is exclusively available through The McGregor Company.

Why are wireworms more prevalent in spring wheat crops?

They're not! Wireworm presence is more noticeable in spring wheat because the crop has fewer tillers making wireworm damage easier to see. Wireworms do not retreat with different crop rotations. They are simply, and quite literally, robbing your crop blind across all rotations.

When and where should I scout for wireworms?

Look in fields that have excessive weed pressure and water pathways in the soil. Wireworms are attracted to decaying organic matter and CO₂ gas given off by respiring plants, so scouting after herbicide applications when soil temperatures are between 55-75°F is ideal.

Notes

EMERGENTST
GUARDIAN